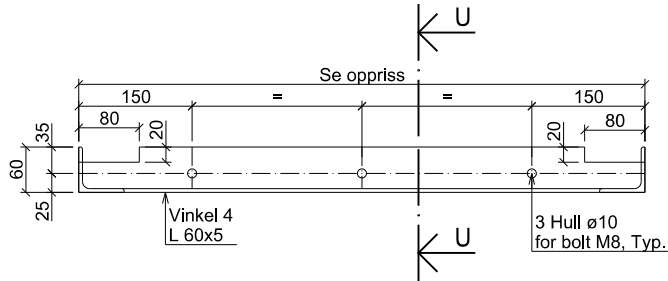
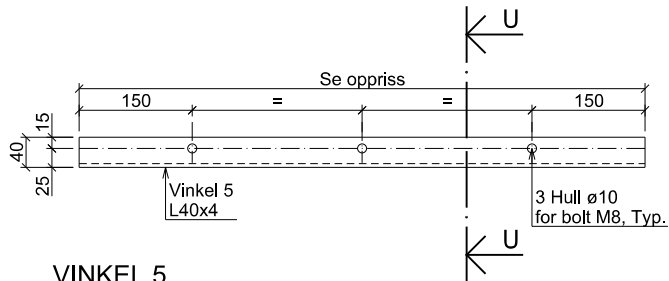


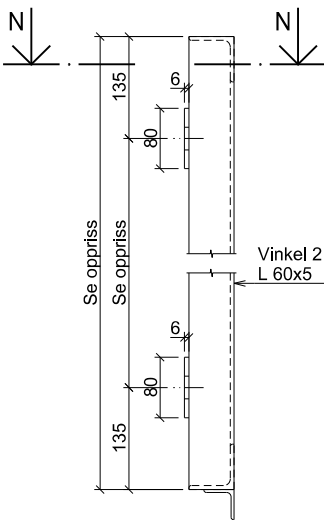
VINKEL 1
SNITT A-A
1:2



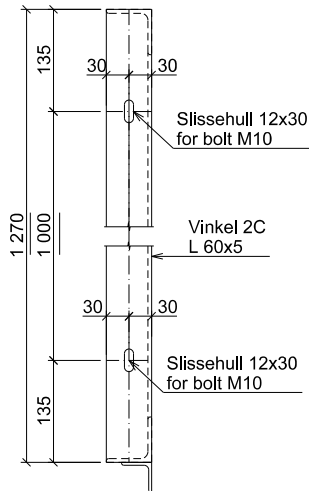
VINKEL 4
SNITT G-G
1:5



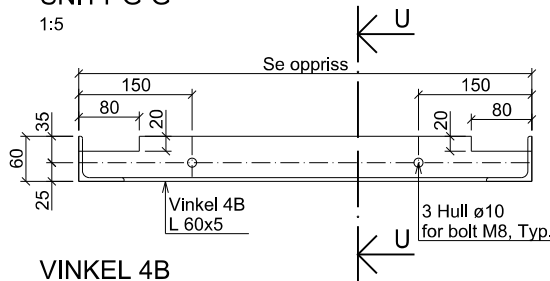
VINKEL 5
SNITT K-K
1:5



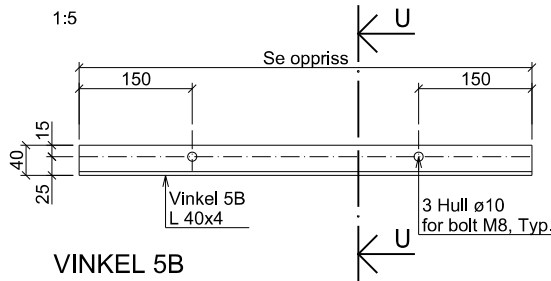
VINKEL 2
SNITT B-B
1:5



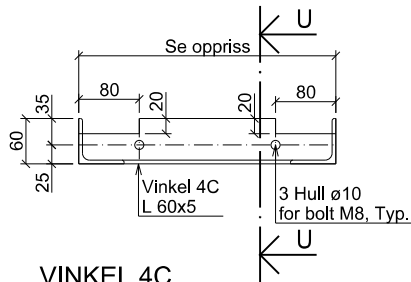
VINKEL 2C
SNITT C-C
1:5



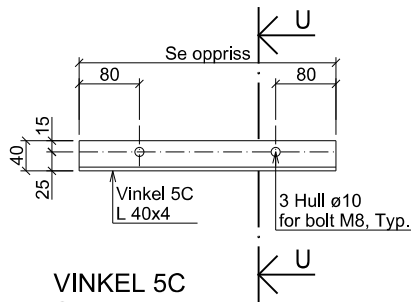
VINKEL 4B
SNITT H-H
1:5



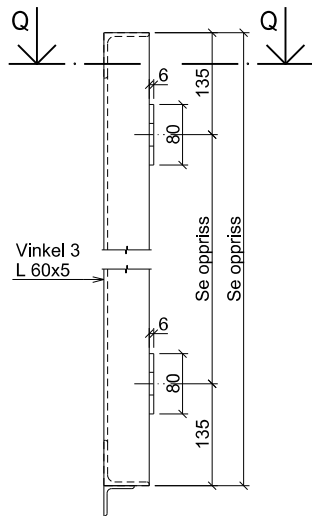
VINKEL 5B
SNITT L-L
1:5



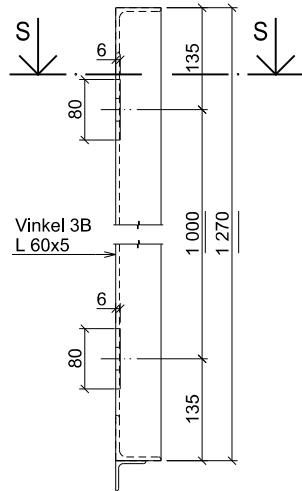
VINKEL 4C
SNITT J-J
1:5



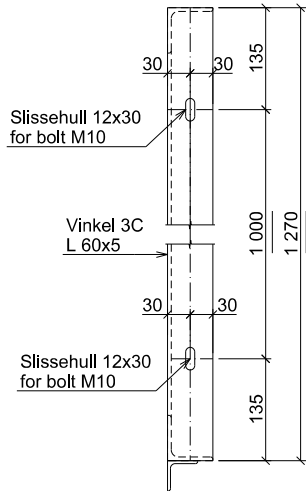
VINKEL 5C
SNITT M-M
1:5



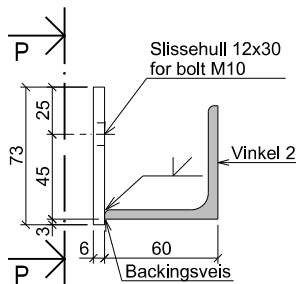
VINKEL 3
SNITT D-D
1:5



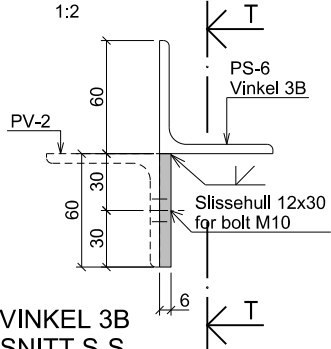
VINKEL 3B
SNITT E-E
1:5



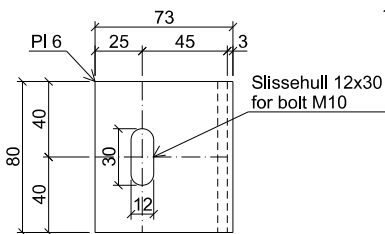
VINKEL 3C
SNITT F-F
1:5



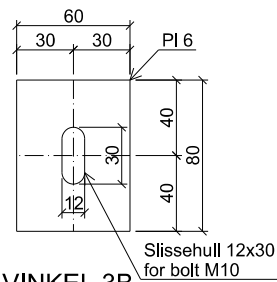
VINKEL 2
SNITT N-N
1:2



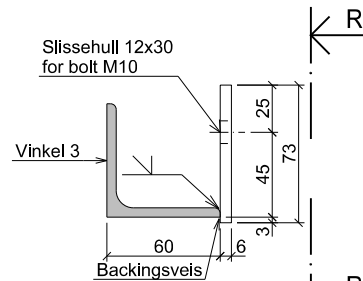
VINKEL 3B
SNITT S-S
1:2



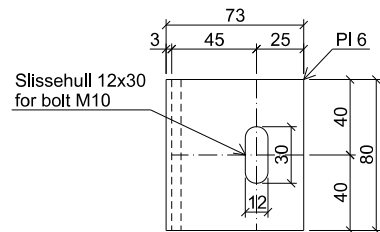
VINKEL 2
SNITT P-P
1:2



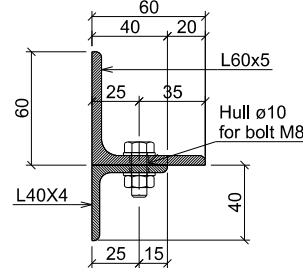
VINKEL 3B
SNITT T-T
1:2



VINKEL 3
SNITT Q-Q
1:2



VINKEL 3
SNITT R-R
1:2



SNITT U-U
1:2

FORKLARINGER:

1. Merk at vinkler har ulik skråskjæring i hjørner i ulike paneler.
Vinkler i hjørner fremgår av oppriss av det enkelte panel vist på andre tegninger.


ANVISNINGER:

1. Stålsort: S355J2+N etter NS-EN 10025-2.
Bolter i kvalitet 8.8.
2. Utførelse etter håndbok R761 Prosesskode 2025, prosess 88.61.
3. Rekkverk varmforsinkes iht. Håndbok N101, korrosjonsklasse C3 med 50 års brukstid.
Bolter varmforsinkes.
4. Konsekvensklasse: CC2.
Utførelsesklasse: EXC2.
Sveisekontrollklasse: WIC2.
5. Påsveist nett skal orienteres slik at vertikale tråder vender mot gangbanen.

HENVISNINGER:

Sømslandet ned, GS-bru, oversiktstegning
Sømslandet ned, GS-bru - forhøyet rekkverk, plan og snitt, oversikt

K20C001
K20-7230

-	-	-	-	-	-
-	-	-	-	-	-
F01	Tilbudstegning	ArP	AGK	GaHel	2026-03-16
Revisjon	Revisjonen gjelder	Utarb.	Kontr.	Godkjent	Rev. dato
-	-	Arkivref.	-	-	-
 E18 Sømslandet ned - GS-bru - forhøyet rekkverk		Tegningsdato	2025-12-01		
		Besøtt	Knut Asbjørn Koland		
		Produsert for	Vedlikehold sør		
		Produsert av	Norconsult Norge AS		
		Koordinatsystem	Euref 89, NTM sone 7		
-		Haydesystem	NN2000		
-		Rekkverkspaneler GS-bru	-		
-		Snitt, Form	-		
-		Byggsnummer	10-1677		
-		Målestokk A1	Som vist		
Utarbeidet av	Kontrollert av	Godkjent av	Konsulentarkiv	Tegningsnummer /	
ArP	AGK	GaHel	52304495	Revisjonsbokstav	
				K20-7260	F01